

INDOOR/OUTDOOR DYES ARE A VERY UNIQUE LINE OF ULTRA VIOLET STABLE, LIQUID CONCRETE DYES THAT PRODUCE AN ACID STAIN PATINA STYLE FINISH IN A FRACTION OF THE TIME.



**COLA**



**DARK WALNUT**



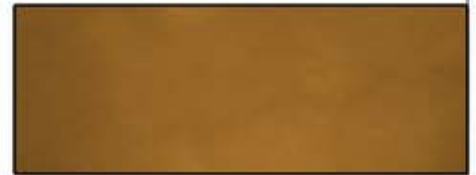
**LIGHT GREEN**



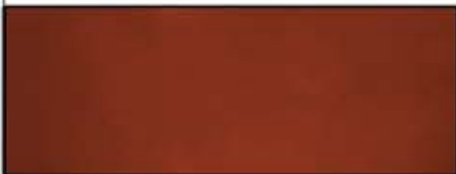
**MALAY TAN**



**BLUE**



**DESERT TAN**



**VINTAGE UMBER**



**LEATHER**



**RED**



**BURNT ORANGE**



**BLACK**



**TERRA COTTA**



**TURQUOISE**



**ENGLISH RED**



**FERN GREEN**



**PURPLE**



**DARK BLUE**



**BROWN**

Due to variations in concrete composition, age, surface conditions, surface preparation, and application techniques exact color will vary from project to project.

Made in the U.S.A.